



PN 331-001, Rev B Shield Adapter

Stacking Header Pin Assignments

Dig 2 Header; P12

1	Vcc	ATD3	2
3	ATD4	ATD5	4
5	PWM3	PWM4	6
7	SCI-RX	SCI-TX	8
9	GND	Out Comp2	10

Dig 1 Header; P15

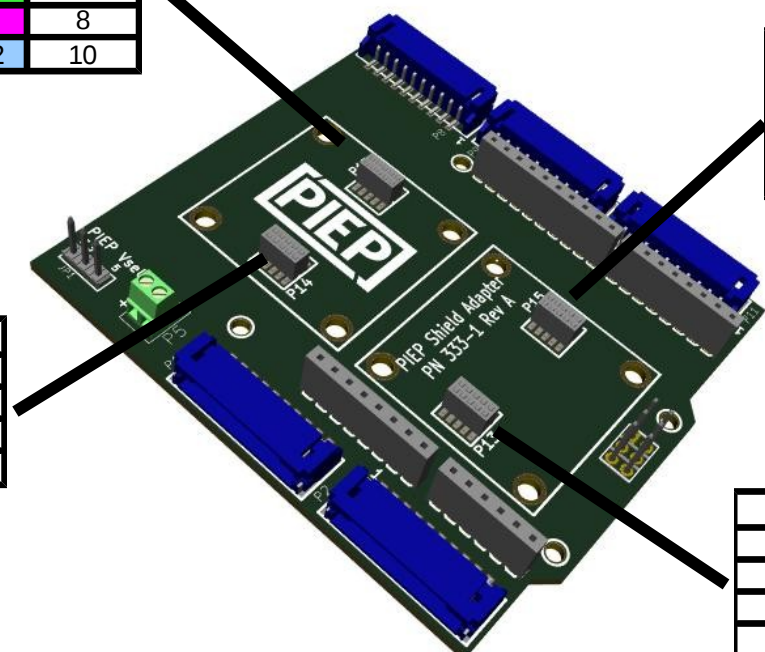
1	Vcc	ATD0	2
3	ATD1	ATD2	4
5	PWM0	PWM1	6
7	Tim0	Input Cap0	8
9	GND	INTR0	10

I2C Header; P14

1	Vcc	Ain0	2
3	Ain1	ATD5	4
5	I2C-SDA	I2C-SCL	6
7	SCI-RX	SCI-TX	8
9	GND	Out Comp2	10

SPI Header; P13

1	Vcc	ATD0	2
3	ATD1	ATD2	4
5	SPI-SCK	SPI-SS	6
7	SPI-MOSI	SPI-MISO	8
9	GND	INTR0	10



PIEP shield adapter permits mounting two stacks 1.25X1.25 standard sized PIEP peripherals on Arduino compatible processor boards. Two of four PIEP peripherals can be used concurrently (P12 or P14 and P15 or P13).

PIEP is a copyright of E3 Embedded Systems, LLC and is protected under US Patent 9,870,337

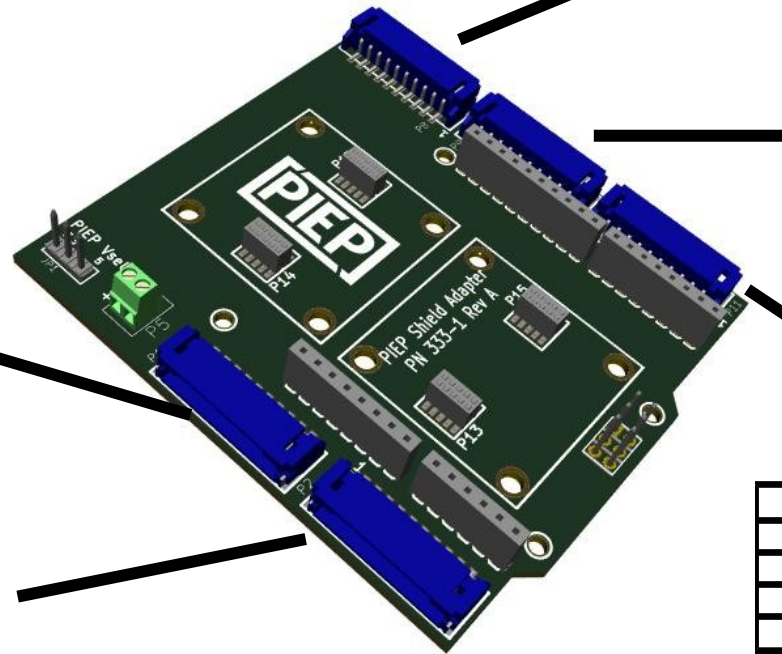


EMBEDDED SYSTEMS



PN 331-001, Rev B Shield Adapter

Shield to PIEP Processor Connectors



P1

1	+5V		2
3	IOLref	Reset	4
5	Vpp	Vpp	6
7	+5V	+3.3V	8
9	GND	GND	10

P2

1	3.3V	AT0	2
3	ATD1	ATD2	4
5	ATD3	ATD4	6
7	ATD5		8
9	GND		10

P8

1	+5V	SCL	2
3	SDA	Adref	4
5	GND	SCK	6
7	MISO	MOSI	8
9	GND	SS	10

P9

1	+3.3V	PWM3	2
3	CP1	Ain1	4
5	Ain0	PWM1	6
7	T0	PWM0	8
9	GND	INTRO	10

P11

1	+3.3V	TXD	2
3	RXD	Reset	4
5	GND	SCK	6
7	SPI-MOSI	SPI-MISO	8
9	GND	+5V	10

When Arduino compatible shields are installed on the PIEP Shield Adapter, signal lines from the shield board can be routed to PIEP processor boards via board to wire breakout headers.

Mating Connectors: SKU 400-007

Mating Leads: SKU 400-009

PIEP is a copyright of E3 Embedded Systems, LLC and is protected under US Patent 9,870,337

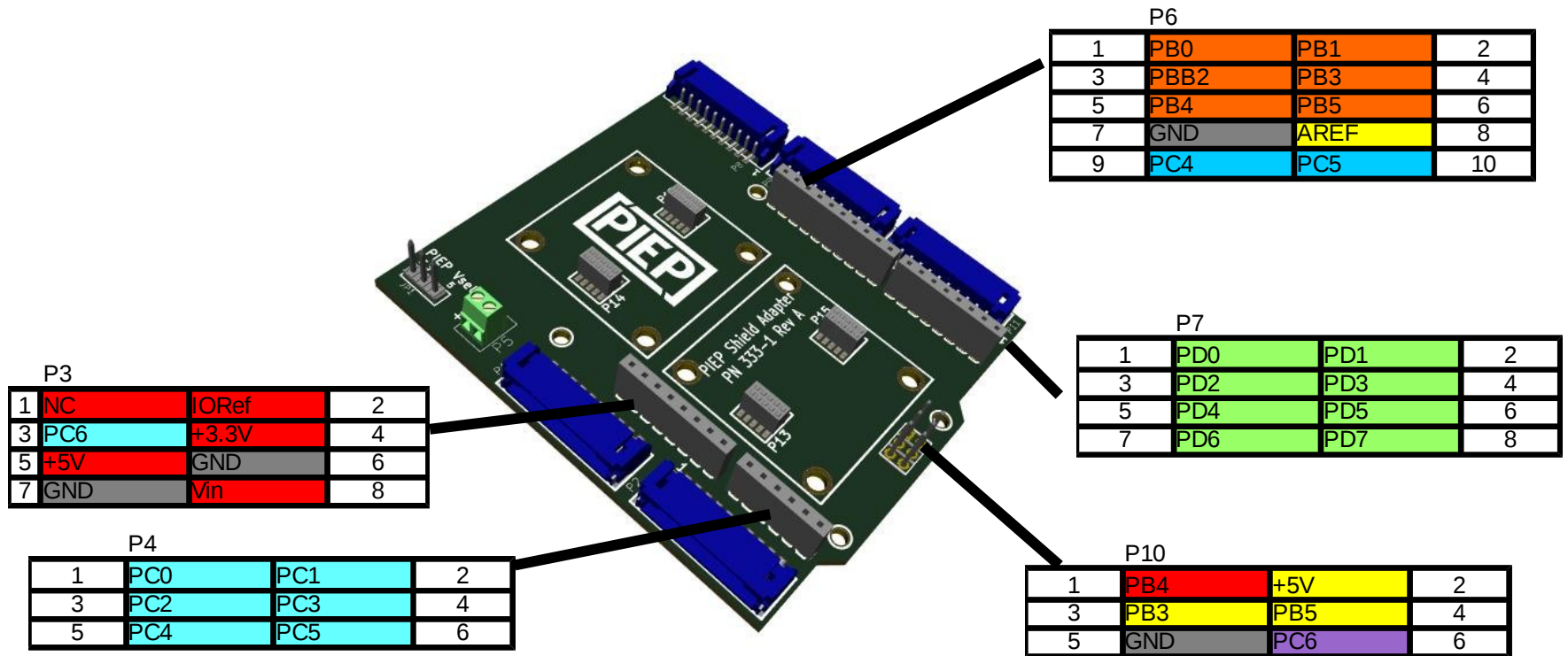


EMBEDDED SYSTEMS



PN 331-001, Rev B Shield Adapter

Shield Signals



Shield header pins (based on R3 Arduino Uno)
Additional Standoffs – SKU 400-012

PIEP is a copyright of E3 Embedded Systems, LLC and is protected under US Patent 9,870,337

