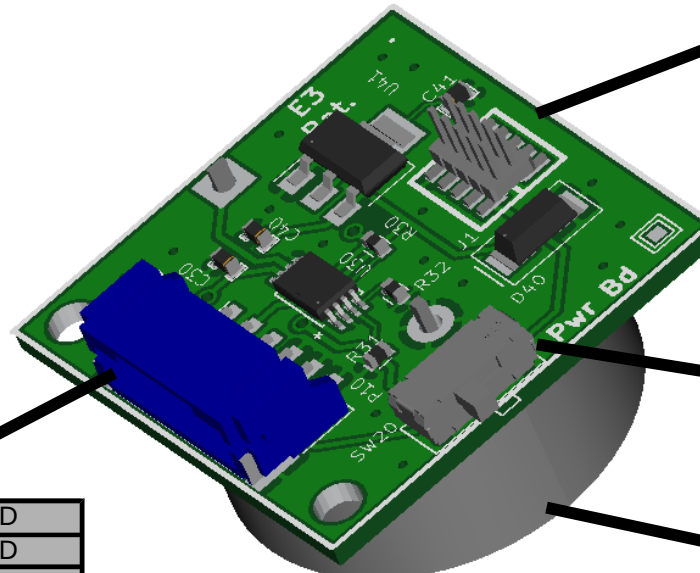




PN 311-29, Rev C Battery Supply Board

Stacking Header Pin Assignments

Top Header			
1	+3.3V		2
3			4
5			6
7			8
9	GND		10



P10 Power Header

1	Vcc_EXT Source	4	GND
2	Vcc_EXT Source	5	GND
3	3.3V out	6	GND

Power Switch – Place in OFF position when powering board stack via USB peripheral board.

Coin cell battery holder (type CR2450/BN)

External Power connector – external power
May be supplied via P10-1/2; P10-4 through 6 (gnd)

P10-2 is a 3.3V output

External power sources connected via P10 are preferentially selected over on board battery. External supply range is 4.4V to 15 V.

Mating connector: SKU 400-005

Pre-crimped leads: SKU 400-009

Spare Battery – SKU 400-008

Batter supply board
External supply regulation via Exar SPX117
Source selection via TI TPS2112A

PIEP is a copyright of E3 Embedded Systems, LLC and is protected under US Patent 9,870,337



EMBEDDED SYSTEMS