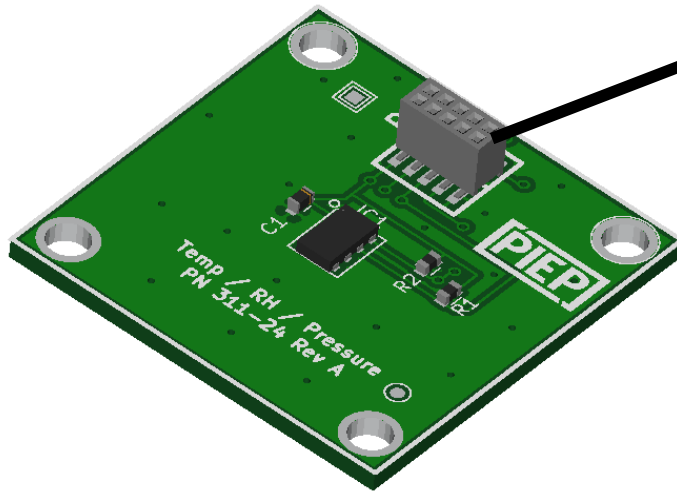




# PN 311-24, Rev A

## Temp / Pressure / RH Board



### Stacking Header Pin Assignments

1	+3.3V		2
3			4
5	I2C_SDA / SDA (3)	I2C_SCL / SCL(2)	6
7			8
9	GND		10

Positions not shown are not utilized by peripheral; but are passed through for use by stacking connectors

Device address:

0x76 – pressure and temperature

0x40 – Relative Humidity

TE Connectivity MS860702BA01-50  
temp, RH, pressure sensor chip

PIEP is a copyright of E3 Embedded  
Systems, LLC and is protected under  
US Patent 9,870,337



**EMBEDDED SYSTEMS**