



PN 311-023, Rev A

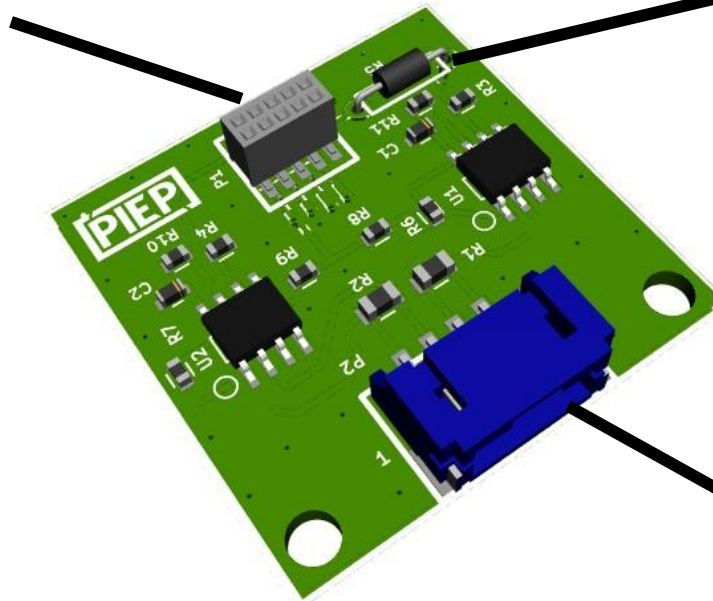
High Side Current Monitor

Stacking Headers

Top and Bottom Headers

1	Vcc	ADC	2
3	ADC*		4
5			6
7			8
9	GND		10

* If second current monitor unused; output can be disabled by removing R5.



Remove R5 to free SPIP-3 (disables output of second Max4172)

DAC does not use SPI MISO line
 + SPI Chip Select – Configure via R3 / R6
 ++ Remote Shutdown; Disable via R1
 ** Triggered updates; Disable via R2

Output Connector P2

1	Hi Side1 (+)	Hi Side 1(-)	3
2	Hi Side2 (+)	Hi Side 2(-)	4

Spare Standoffs – SKU-400-012
 Mating Connector – SKU 400-015
 Precrimped Leads – SKU 400-009

Max4172 high side current monitor; input voltage 3 to 32 Volts DC; current max 2 Amps. Output is analog signal scaled at 500 mV per Amp. Two monitoring chips provide two independent circuits for current monitoring.

PIEP is a copyright of E3 Embedded Systems, LLC and is protected under US Patent 9,870,337



EMBEDDED SYSTEMS