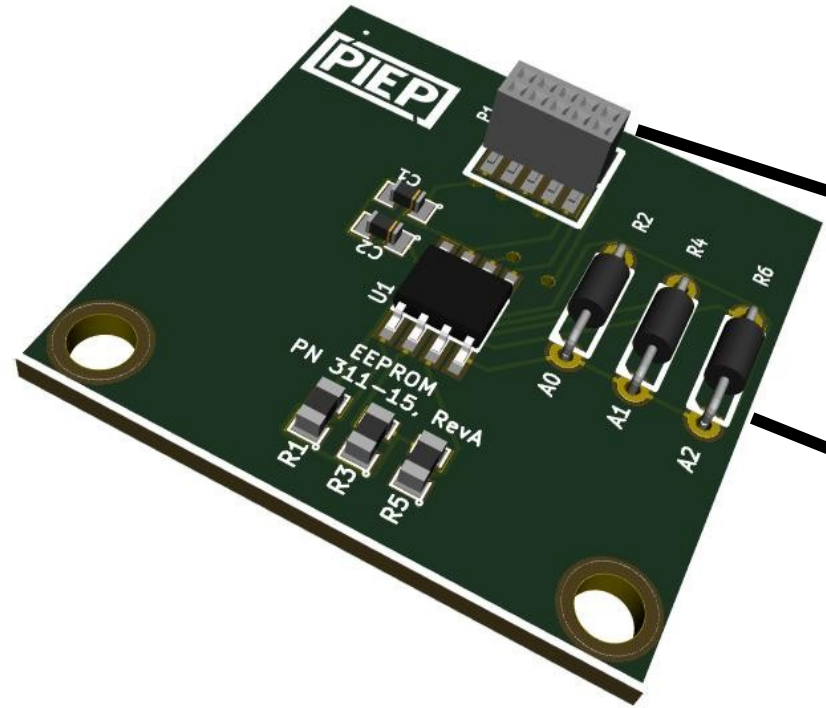




PN 311-015, Rev A

EEPROM board, I2C Interface



Stacking Headers

Top & Bottom Headers

1	VCC		2
3			4
5	I2C-SDA+	I2C-SCL+	6
7			8
9	GND		10

Default I2C Address – 0x50 (7-bit)
 Alternate Addresses:
 R2 removed – 0x51
 R4 removed – 0x52
 R6 removed – 0x54
 R2 & R4 removed – 0x53
 R2 & R6 removed – 0x55
 R4 & R6 removed – 0x56
 R2, R4, R6 removed - 0x57

24AA256, 256kbit EEPROM, I2C interface with max speed of 400 Khz. 3.3V or 5V operation
 Spare Standoffs – SKU 400-012

PIEP is a copyright of E3 Embedded Systems, LLC and is protected under US Patent 9,870,337

