

PIEP PN 311-014, Rev C

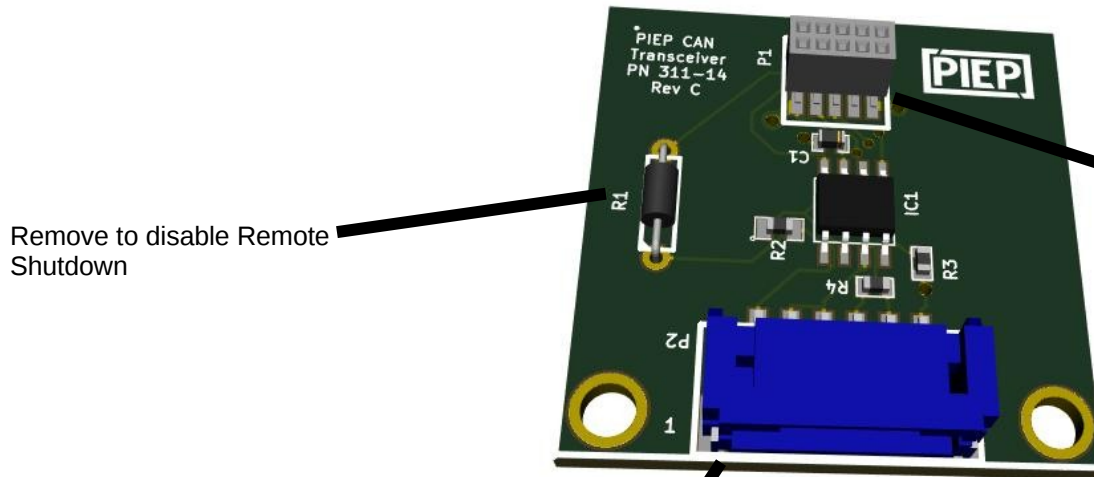
CAN Transceiver, TTL CAN Interface

Stacking Headers

Top & Bottom Headers

1	3.3V		2
3			4
5		DIO*	6
7	CAN1-RX	CAN1-TX	8
9	GND		10

* Remote Shutdown; Disable by removing R1



Remove to disable Remote Shutdown

Output Connector P2

1	3.3V	Term Res	4
2	CAN(H)	CAN(L)	5
3	CAN(H)	GND	6

Terminating resistors must be connected on end of line CAN boards. To enable Terminating resistor, jumper pins 3&4 on P2 connector.
 Mating P2 connector – SKU 400-005
 Pre-crimped leads – SKU 400-009

MAX3051 based CAN transceiver; 3.3V logic. Use of this board requires processors with TTL level CAN logic. Default max speed is 2.27 kbps (set via R3 resistor). Board includes terminating resistors for end of line connections (CAN boards at the end points of communications lines). To enable terminating resistors, install a jumper wire between pins 3 & 4 on connector P2. CC2541 mini-stack board does not support this peripheral.

PIEP is a copyright of E3 Embedded Systems, LLC and is protected under US Patent 9,870,337