

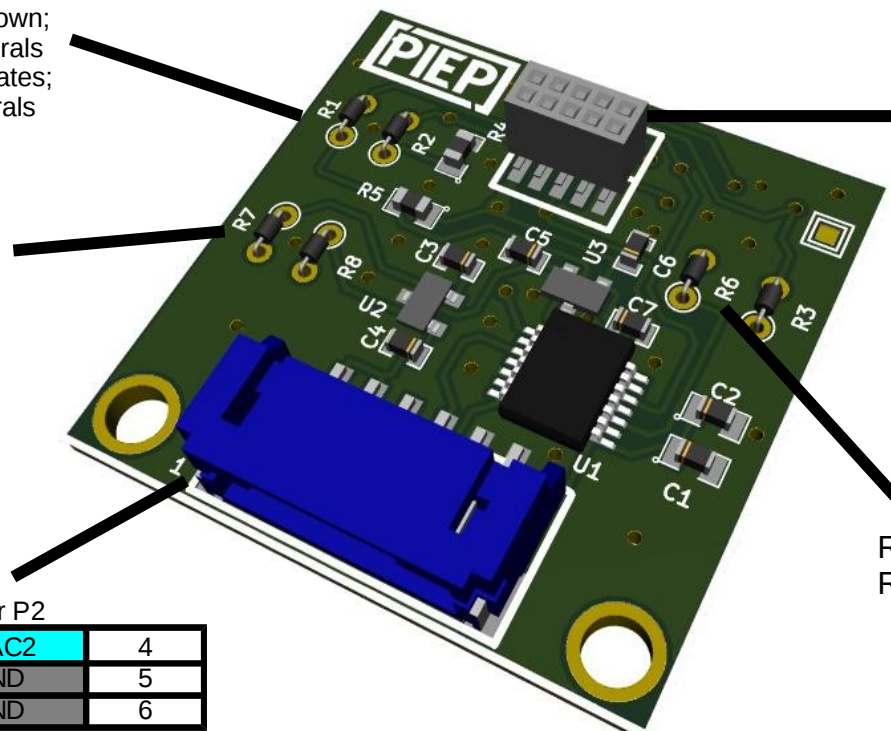


# PN 311-009, Rev B

## Digital to Analog; SPI interface

Remove R1 to disable remote shutdown;  
 Frees SPIP-4 for stacked peripherals  
 Remove R2 to disable triggered updates;  
 Frees SPIP-3 for stacked peripherals

Remove R7 if Vcc = 3.3V  
 Remove R8 if Vcc = 5V



### Stacking Headers

Top and Bottom Headers

1	5V / 3.3V	DIO+	2
3	DIO**	DIO++	4
5	SPI-SCK*	DIO+	6
7		SPI-MOS	8
9	GND		10

DAC does not use SPI MISO line  
 + SPI Chip Select – Configure via R3 / R6  
 ++ Remote Shutdown; Disable via R1  
 \*\* Triggered updates; Disable via R2

Remove R3 for Chip Select via SPIP-2  
 Remove R6 for Chip Select via SPIP-6

Output Connector P2

1	5V / 3.3V	DAC2	4
2	5V / 3.3V	GND	5
3	DAC1	GND	6

Vsupply available on pins 1 & 2  
 DAC1 output – pin 3  
 DAC2 output - pin 4  
 Mating P2 connector – SKU 400-005  
 Pre-crimped leads – SKU 400-009  
 Spare Standoffs – SKU 40-012

MCP4922 digital to analog converter; 12-Bit; SPI interface. Jumper selectable 1.6V or 2.5V reference voltage (internally) doubled to support max outputs of 3.3 Volt and 5 Volt outputs. Dual, independent, outputs. Remote disable and triggered or non-triggered output updates supported.

PIEP is a copyright of E3 Embedded Systems, LLC  
 and is protected under US Patent 9,870,337



# EMBEDDED SYSTEMS