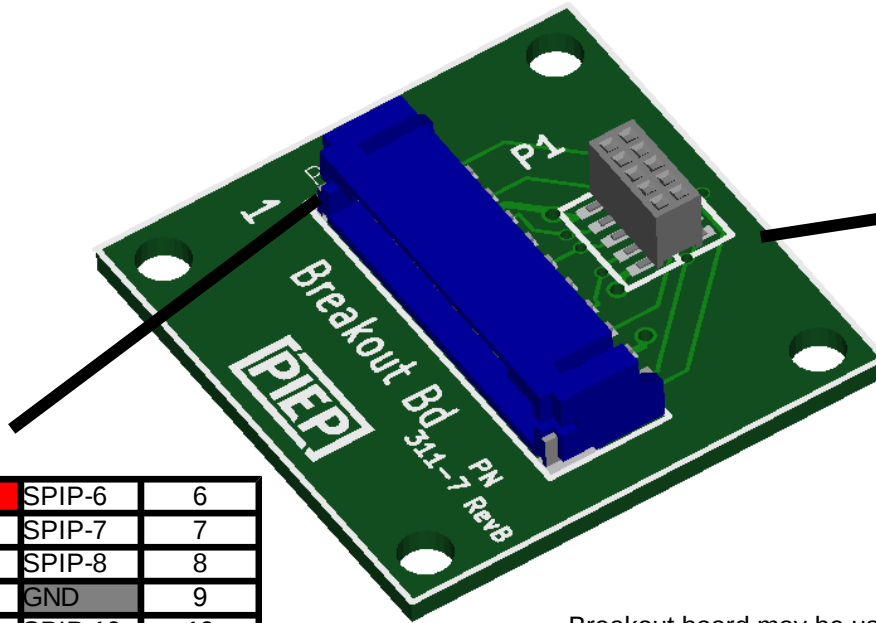




# PN 311-07, Rev A Breakout Board



## Stacking Header Pin Assignments

Top / Bottom Header			
1	3.3V		2
3			4
5			6
7			8
9	GND		10

Bottom header pins are routed to corresponding pins on top header and P2 header

## P2 Pinout

1	3.3V	SPIP-6	6
2	SPIP-2	SPIP-7	7
3	SPIP-3	SPIP-8	8
4	SPIP-4	GND	9
5	SPIP-5	SPIP-10	10

Mating connector – JST type PHR-10  
Pre-crimped leads – JST type ASPHSPH24K305

Breakout board may be used for monitoring signals between processor and a peripheral (such as monitoring I2C data transmissions) by inserting breakout between peripheral and processor; connecting data monitoring via P2 connector.

When used in pairs; breakout boards may be used to remotely mount peripherals (see remote mounting hardware sheet).

Breakout board may be used to directly interface signals to processor from external devices via P2 connector.

PIEP is a copyright of E3 Embedded Systems, LLC and is protected under US Patent 9,870,337

