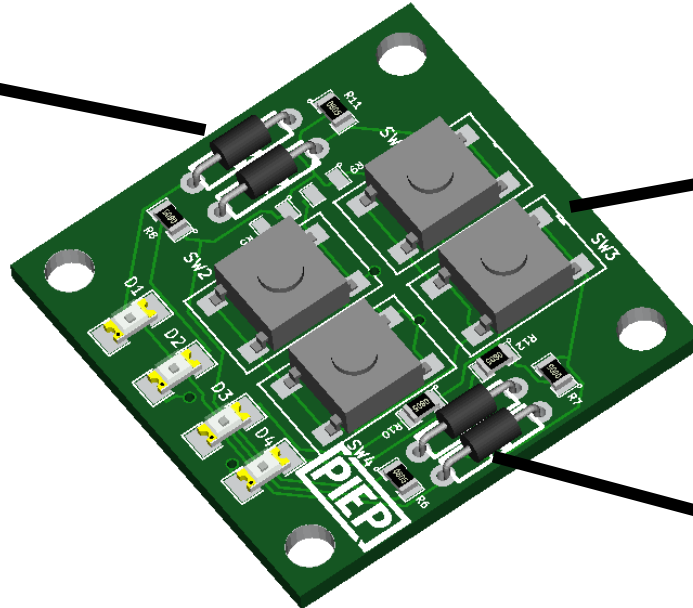




PN 311-03, Rev B Switch / LED Board

Remove R1 to disable switch 1
and free resource SPIP-2
Remove R3 to disable LED 1
and free resource SPIP-5



Stacking Header Pin Assignments

Bottom Header Pin Assignments

1	Vcc	DIO* (sw1)	2
3	DIO (sw2)	DIO* (sw3)	4
5	DIO* (LED1)	DIO (LED2)	6
7	DIO* (LED3)	DIO (LED4)	8
9	GND	DIO (sw4)	10

Most special purpose processor pins (SPI, PWM, I2C, ADC, etc) can be utilized as general purpose digital I/O lines (as required for switch / LED board). Pins 2 through 3 and 10 are inputs (switches) while 4 through 8 are outputs (logic low turns respective LED ON).

Remove R2 to disable switch 3 and free resource SPIP-4
Remove R4 to disable LED 3 and free resource SPIP-7

PIEP is a copyright of E3 Embedded Systems, LLC and is protected under US Patent 9,870,337

