

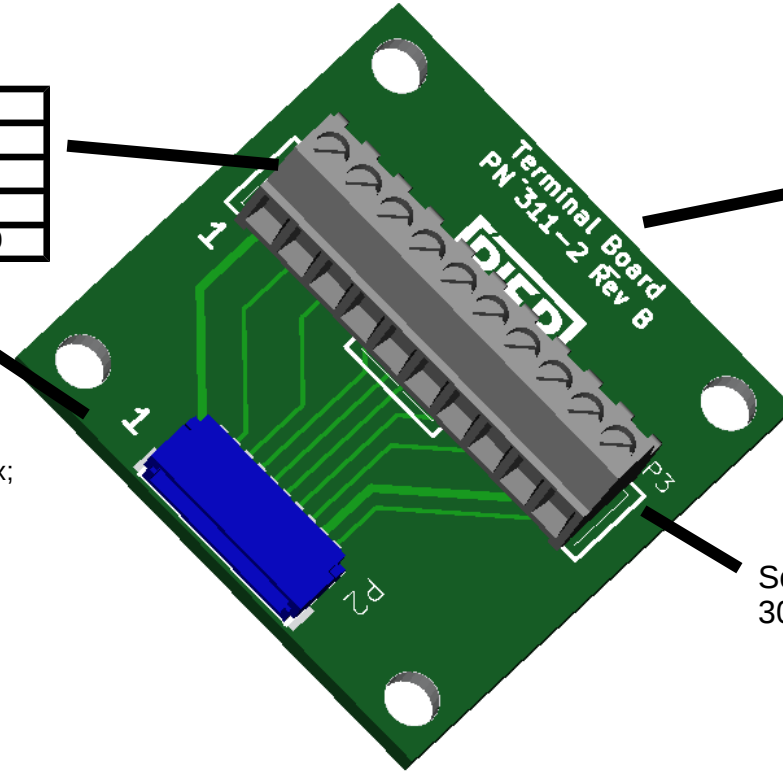


PN 311-002, Rev B Terminal Board

P2 and Terminal Pinout

1	Vcc	SPIP-6	6
2	SPIP-2	SPIP-7	7
3	SPIP-3	SPIP-8	8
4	SPIP-4	GND	9
5	SPIP-5	SPIP-10	10

Mating P2 connector – SKU 400-001
 Pre-crimped leads –SKU 400-010
 Spare Standoffs – SKU 400-012
 P2 connector rating 1 Amp per pin max;
 30 Volts.



Stacking Header Pin Assignments

Bottom Header			
1	Vcc		2
3			4
5			6
7			8
9	GND		10

Bottom header pins are routed to corresponding pins on terminal and P2 header

Screw Terminals rated at 2 Amps per terminal max & 30 Volts

Terminal board may be used to directly interface signals to processor from external devices via P2 connector.

PIEP is a copyright of E3 Embedded Systems, LLC and is protected under US Patent 9,870,337

