



PN 311-001, Rev B Relay Board

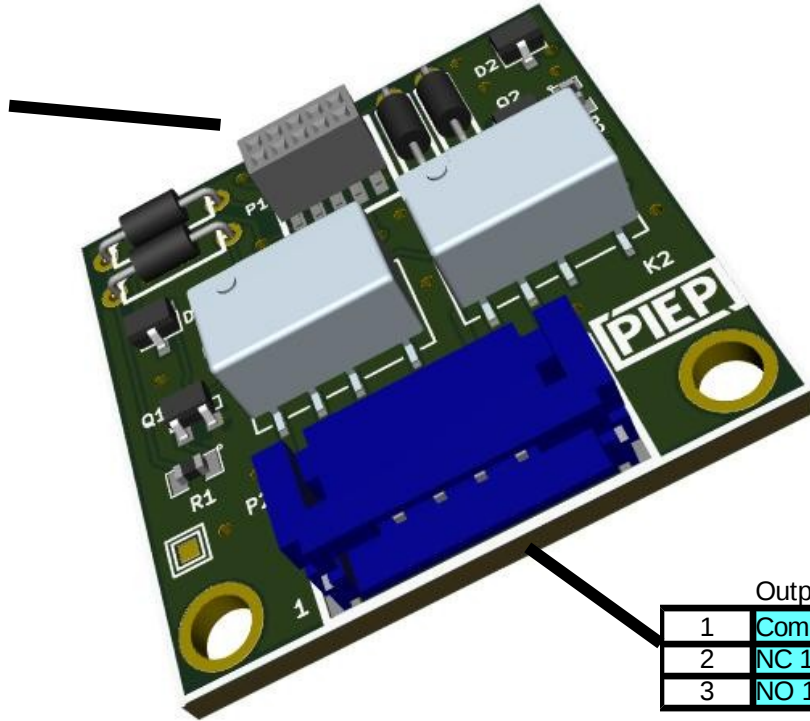
Stacking Header Pin Assignments

Top and Bottom Stacking Headers

1	Vcc		6
2	DIO*	DIO+	7
3			8
4	DIO*	DIO+	9
5	GND		10

* Remove R3 to route K1 control to SPIP3;
Remove R4 to route K1 control to SPIP7;

+ Remove R5 to route K2 control to SPIP8;
Remove R6 to route K2 control to SPIP4



Output of P2 Connector

1	Com 1	Com 2	4
2	NC 1	NC 2	5
3	NO 1	NO 2	6

Mating Connector SKU 400-005
Precrimped leads – SKU 400-009
Spare Standoffs – SKU 400-012

TE Connectivity type IM01GR signal relay, 3.3V coil (5V tolerant); max current 2 Amps. Max contact voltage 24 Volts; Flyback diodes integrated on coils. Relay is DPDT; but configured as SPDT on board

PIEP is a copyright of E3 Embedded Systems, LLC and is protected under US Patent 9,870,337



EMBEDDED SYSTEMS