



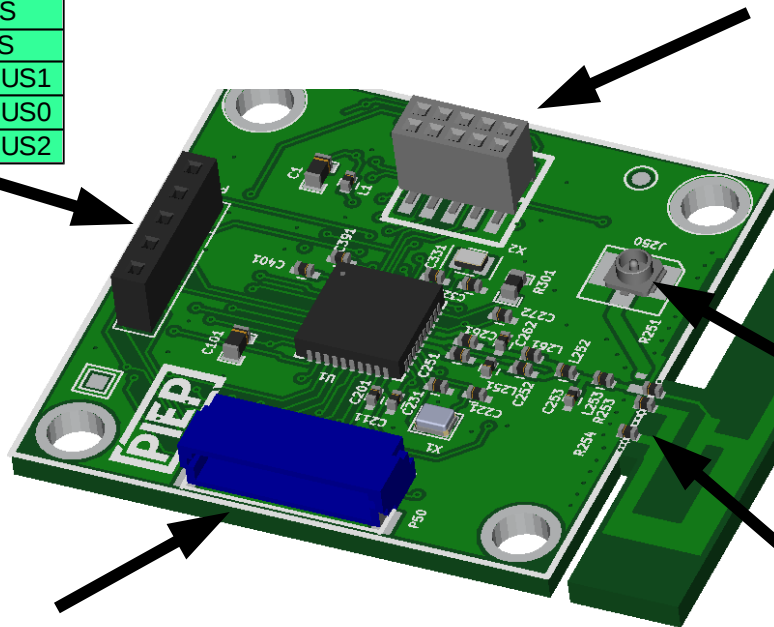
PN 211-01, Rev B CC2541 Processor Board

USB Bootload Port P60

Pin	uP Port	USB Sig
1	P1.4	CTS
2	P1.5	RTS
3	P2.1	CBUS1
4	P2.2	CBUS0
5	Rst	CBUS2

Top Peripheral Interface

1	+3.3V	ADC (P0-0)
3	ADC (P0-1)	DIO (P1-0)
5	I2C_SDA / SDA (3)	I2C_SCL / SCL(2)
7	SCI2_RX (P1-7)	SCI2_TX (P1-6)
9	GND	IRQ (P1-2)



Bottom (opposite top header)

1	+3.3V	ADC(P0-6)	2
3	ADC (P0-7)	DIO (P1-1)	4
5	SPI_CLK / PWM (P0-3)	SPI_SS/PWM (P0-2)	6
7	SPI_MISO/SCI_RX (P0-5)	SPI_MOSI/SCI_TX (P0-4)	8
9	GND	IRQ (P1-3)	10

Debug Header P50

1	GND	6	P1.5
2	3.3V	7	RST
3	P2.2	8	P1.6
4	P2.1	9	P2.0
5	P1.4	10	P1.7

Mating connector – SKU 400-001
Crimped leads – SKU 400-010
Additional Standoffs – SKU 400-010

CC2541F256RHAR processor with 32 MHz primary crystal and 32.768 KHz sleep timer.

PIEP is a copyright of E3 Embedded Systems, LLC and is protected under US Patent 9,870,337

External antenna (such as Anaren PN 66089-2406) – type U.FL connection. Remove R251, R253, R254 to disable integral strip antenna.

Strip antenna. May be removed via break-away tabs. R251, R253, R254 must be removed prior to breaking off strip antenna



EMBEDDED SYSTEMS